

? PATHWAYS



?PATHWAYS



**Introduction to
Higher Education**



pathwaystohe.ac.uk

reach@le.ac.uk

Who Are We?

Pathways is all about working with people, such as you all, to help you explore all of your options and reach for full potential through education.

Find out more by visiting our website: Pathwaytohe.ac.uk

Make sure you take a look at our Opportunities tab:



Who are you?

- What hobbies do you have?
- What job do you want when you are older?
- Do you have any pets?
- What are you good at?
- Who do you admire and why?

Tell me...



- 1) Find out about student life – opportunities, studying, finance and accommodation
- 2) Explore and compare different university course options and requirements
- 3) Relate existing knowledge and interests to university subject areas and degree programmes



Further Education (FE)

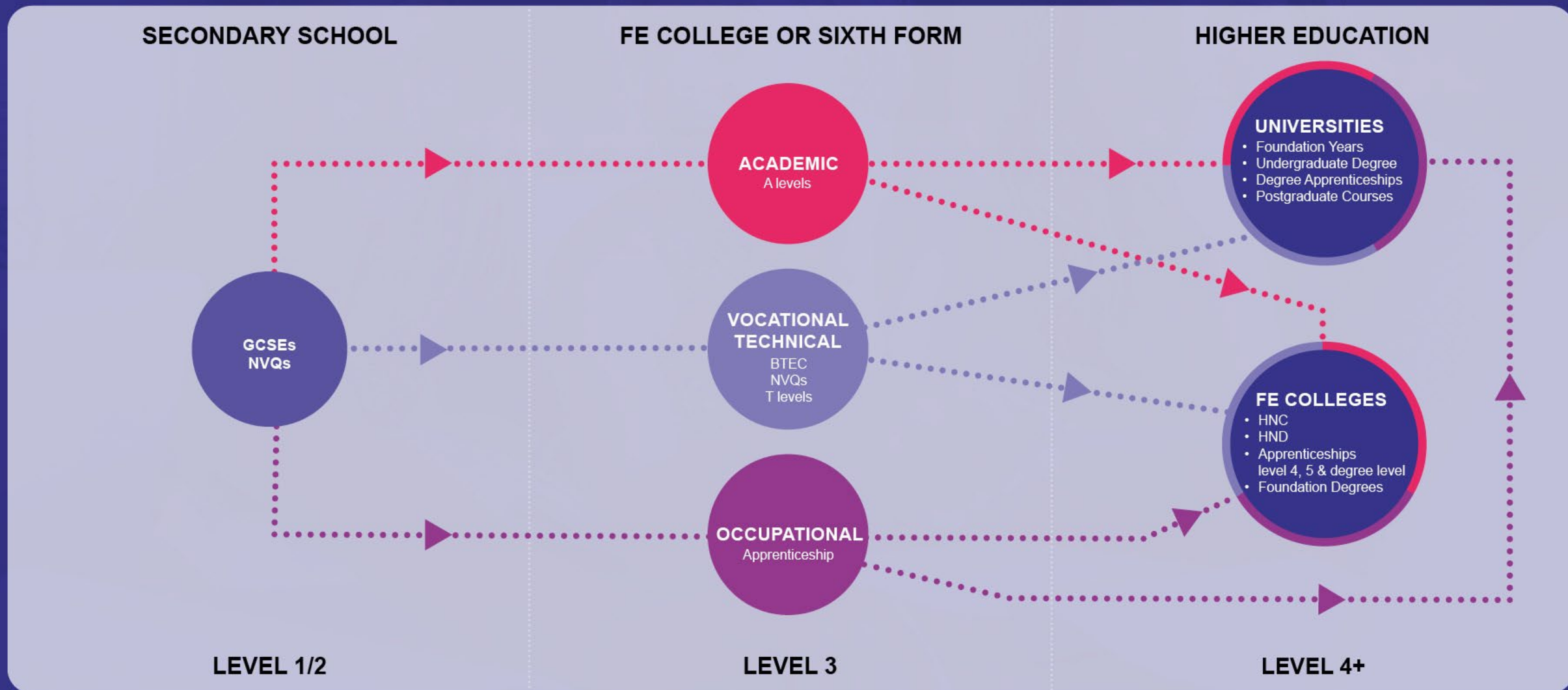
FE refers to educational choices after you complete secondary education.

It covers all qualifications lower than a degree (level 4)

Higher Education (HE)

Applies to any form of education that results in a level 4 or above qualification.

ROUTES INTO HIGHER EDUCATION



Choosing a qualification

Picking a university

Deciding on accommodation

Your learning and social needs

WORKSHEET CHOOSING A UNIVERSITY

Choosing a University Course

Deciding if you want to enroll on a course at University after college or sixth form can be a difficult task. Below you will find a series of questions to help you consider the different options at University. You will need to use the Pathways website to help you understand and answer some of the questions. You may want to add other aspects to this diagram that aren't there, as this is personal so will be different for everyone!

Your Chance to Explore: Make sure you visit pathwayshe.ac.uk

Do you know what course you want to study?
YES
NO

Are there any careers that interest you or do you think this subject might help you achieve?

Do you prefer to be assessed through coursework or exams?

Would you like the chance to study abroad? Read a student blog about studying abroad to find out more about the places you can go and what you could gain from the experience. (area on website for this?)

Would you be interested in a single or joint honours degree? Find examples of a joint honours degree by choosing a University, then have a look round and click on the top right corner 'more info'. Here, you can look at their online prospectus.

Are you interested in a placement year in a relevant industry? Read about experiences on placement years in the student blogs available (area on website for this?).

Study abroad is the term given to a program, usually run through a university, which allows a student to live and study in a foreign country and attend a foreign university.

A joint honours allows you to study two subjects and then combine them into a single qualification.

Think about where you are currently most successful/confident in your studies - for coursework submissions or during exams.

A placement year is an opportunity for you to spend a year gaining valuable work experience in a relevant workplace to your course. This usually happens after your second year at university.

Which subjects do you enjoy?

What careers fields are of interest to you?

What are your strongest subjects?

Do you have experience in a particular field that you enjoy?

Name: _____ School: _____

Year Group: _____

Logos: University of Leicester, Uni Connect Programme

WORKSHEET CHOOSING A UNIVERSITY

Choosing where to study

Deciding where to study when you finish college/sixth form can be difficult. Below are some suggestions on aspects to prioritize when researching your options at a university. You may want to add other aspects to this diagram that aren't there, as this is personal so will be different for everyone!

Your Chance to Explore: Make sure you visit pathwayshe.ac.uk

Would you like to live at University or home whilst you study?

What would be your ideal distance from home? Consider your main form of transport.

Would you prefer a city or rural campus?

Are there any city attractions you would be looking for? To give you some ideas, look at the videos on the pathwayshe.ac.uk homepage.

There will be lots of student support available at University. Are there any particular types of support you would be looking for? Choose a University in the 'Support' tab, go to 'take a quick tour', and watch the 'student services' video.

Are there any particular clubs or societies you would like there to be available? Note down some that interest you by exploring 'societies' in the 'university opportunities' help sheet.

Rural campuses are located in the country, often near farms and wilderness areas and usually near a small town.

What types of accommodation would you like there to be? To give you an understanding on what types of accommodation is available, on the explore tab, choose any University, then 'accommodation' and note down aspects that interest you (i.e. ensuite, shared kitchen, city living, campus living...).

Name: _____
Year Group: _____ School: _____

Logos: University of Leicester, Uni Connect Programme

What Is An Undergraduate Degree?

An undergraduate degree is usually 3 years worth of study at a university of your choice. Methods of testing will vary but can include exams, essays, presentations, practical assessments and reports. Sandwich years and work placements are also possible.

Starting Level:	All undergraduate degrees start from level 4. If you have a HNC or HND that you are combining, your qualification starting level will be higher.
Style of Learning:	This is entirely dependent on the degree you take.
Grades:	The highest grade is a First. Further grades include 2:1, 2:2, 2:3
How are they assessed?	Exams, essays, reports, presentations, practical assessments...
Length:	Academic UD's are typically 3 years. Nursing, some engineering and those attached to postgrad degrees will take longer.
Subject Options:	There are over 36000 undergraduate degrees in the UK.



At a glance!

What Is A Degree Apprenticeship?

In a degree apprenticeship, you combine working for a company and studying towards a university degree. As an apprentice, you are employed and earn a wage throughout the whole programme, but will spend part of your time (around 20%) studying at degree level. A good CV is crucial for this process.

Starting Level:	These are available from level 4, up to level 7. They combine work with study and may include a combined qualification or a professional qualification relevant to the industry.
Style of Learning:	Distance/Classroom style and requires independent study.
Grades:	End point assessment.
How are they assessed?	MCQ's, interviews, project, presentations.
Length:	3 to 4 years depending on what level you start at.
Subject Options:	Varies every year. Varies on willingness to travel.



At a glance!

What Other HE Qualifications Exist?

HNC – Higher National Certificate & HND – Higher National Diploma are practical-based courses that can prepare you for either work after completion or studies at degree level. Foundation Degrees focus on a particular job or profession.

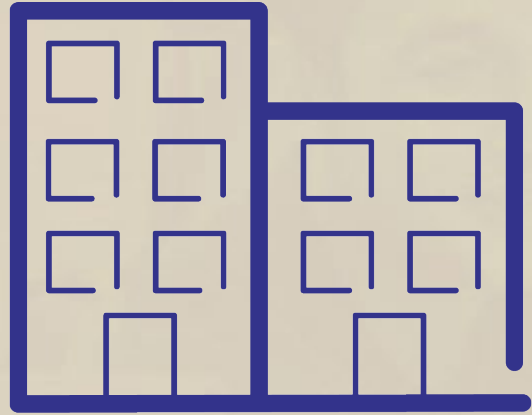
Starting Level:	HNC = Level 4 HND = Level 4 Foundation Degree = Level 4
Style of Learning:	This is entirely dependent on the degree you take
Grades:	The highest grade is a First. Further grades include 2:1, 2:2, 2:3
How are they assessed?	Exams, essays, reports, presentations, practical assessments...
Length:	HNC is one year, HND takes two years Foundation degree is up to 2 years
Subject Options:	Business, computing, education, engineering etc



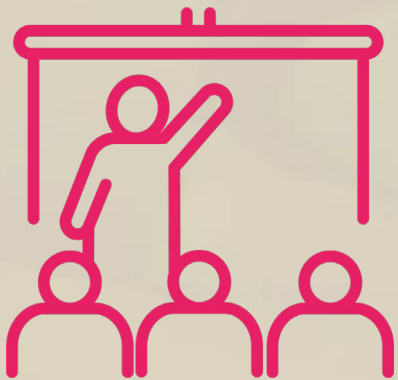
At a glance!



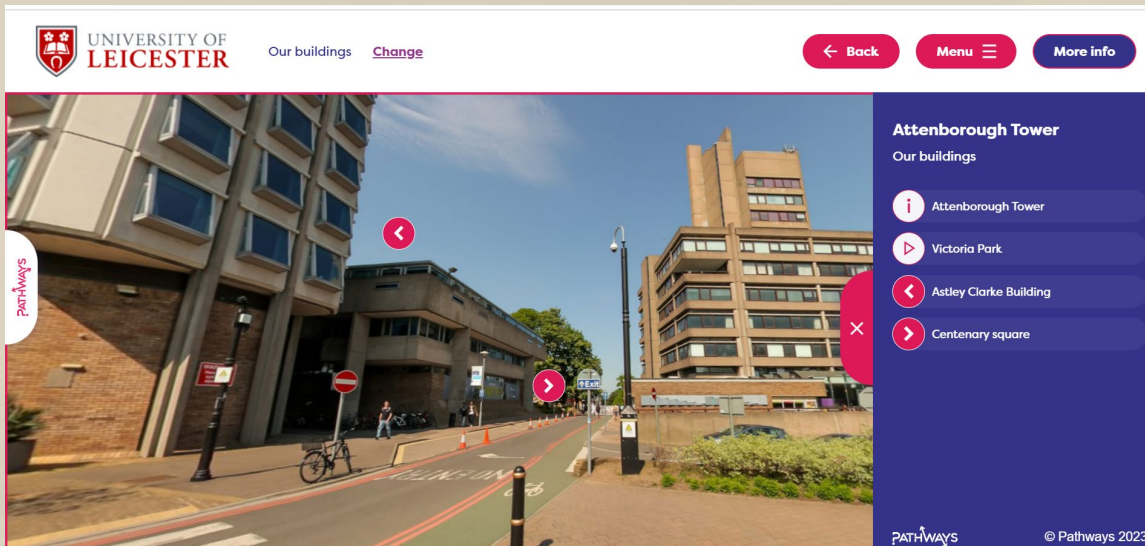
<https://youtu.be/-kb2ptRDBYE>



What's next?



Exploring the Campuses



Does anyone know what a 'campus' means?



'the grounds and buildings of a university or college.'

Exploring the Accommodation

DE MONTFORT UNIVERSITY LEICESTER

8 images

On the edge of campus, next to a large supermarket and the QE11 leisure centre, New Wharf Hall is owned and managed by DMU. The flats consist of 4, 7 or 10 bedrooms, with each one having a shared bathroom. Allocated car parking spaces for students with a disability are also available. TV points are available in kitchens.

Waterway Gardens are owned and managed by DMU. It consists of 6 bedroom houses, each with a shared bathroom and laundry facilities. Waterway Gardens offer long contracts and are exclusively for nursing and midwifery students.

Bede Hall is just on the edge of campus and is owned and managed by DMU. Bede Hall consists of 7, 8, 9 and 10 bedroom flats each with a shared bathroom and a shared kitchen. Communal

3/8 - New Wharf Hall

There are a variety of different forms of accommodation at university.

DE MONTFORT UNIVERSITY LEICESTER

Merlin Heights

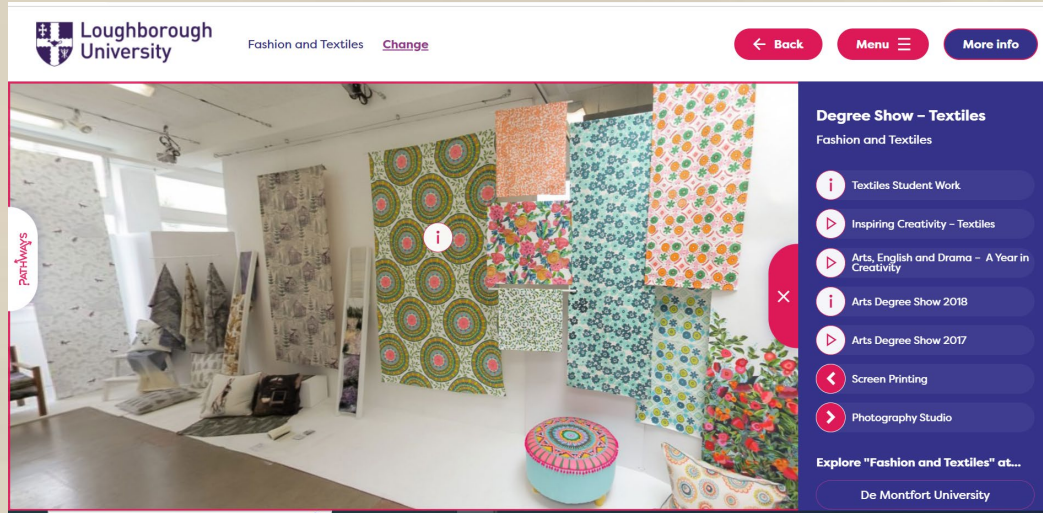
2 images

Opened in Sept 2016, Merlin Heights is located in the heart of Leicester. This stylish accommodation has en-suite rooms in shared apartments with quality fixtures. There's a Sky Lounge social space complete with a drinks area and study space. The Games Room on the ground floor has comfortable seating areas, a TV, a pool table and ping-pong table and is a cosy space for friends to meet.

1/2

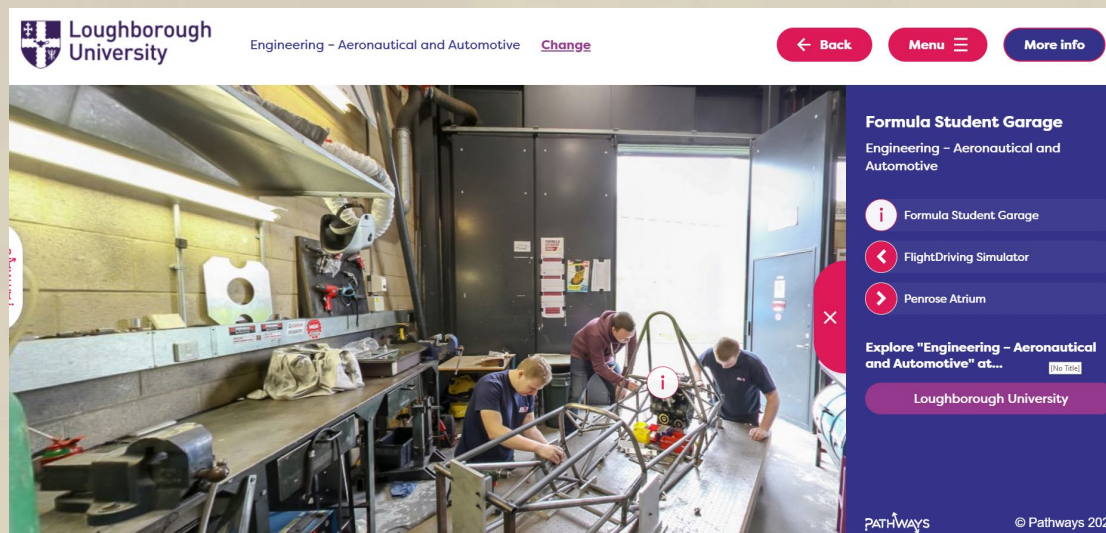
- Shared facilities
- Ensuite
- Catered
- Uncatered
- Living at home and commuting

Exploring the Learning Spaces



Universities have different learning spaces.

- Seminar rooms
- Lecture theatres
- Libraries
- Computer labs
- Laboratories
- Workshop spaces (engineering)
- And many more!



Tuition Fee Loans

- Covers upto the full cost of your degree (9250)
- Is given direct to the university once attendance is confirmed (each term)
- All UK students are eligible regardless of household income
- Repayments are deferred until after graduation
- Repayments start when earning are above the current threshold

Maintenance Loans

- Used for general living costs
- UK student eligibility
- Based n household income
- Is paid directly to the student
- Repayment details are the same as the tuition fees

Both 'loans' could be viewed as a 'graduate tax' because neither will affect your future credit and finances.

Student Finance England can provide tuition and maintenance support. Your University of choice may also provide a bursary or scholarship.

- Sports Scholarships
- Access Scholarships
- Care leavers bursary
- Professional Scholarships
- NHS Learning Support Funds
- Sanctuary Scholarship
- Women in Science Bursary



The other advantages of university

- Varsity sports
- International trips and placements
- Creative arts festivals and events
- Access to sporting, dance and recreational facilities
- Student societies

What do you need to think about now?

In this session we have...

Introduced you to the different types of LEVEL 4+ qualifications that exist:

Introduced some key words and phrases that you might hear.

Looked at what other things you will need to consider if you go to university.

We've talked about the different types of qualifications

We've talked about what's involved in an academic vs vocational courses

We've talked about the different course types that you can choose from at HE



Activity Recap



WORKSHEET CHOOSING A UNIVERSITY

Choosing a University Course

Deciding if you want to enroll on a course at University after college or sixth form can be a difficult task. Below you will find a series of questions to help you consider the different options at University. You will need to use the Pathways website to help you understand and answer some of the questions. You may want to add other aspects to this diagram that aren't there, as this is personal so will be different for everyone!

Your Chance to Explore: Make sure you visit: pathwaystohe.ac.uk

Do you know what course you want to study?

YES → Are there any careers that interest you or you think this subject might help you achieve?

NO → Which subjects do you enjoy?
What careers/ fields are of interest to you?
What are your strongest subjects?
Do you have experience in a particular field that you enjoy?

Would you be interested in a single or joint honours degree? Find examples of a joint honours degree by choosing a University, then 'have a look round' and click on the top right corner 'more info'. Here, you can look at their online prospectus.

A joint honours allows you to study two subjects and then combine them into a single qualification.

Do you prefer to be assessed through coursework or exams?

Think about where you are currently most successful/ confident in your studies – for coursework submissions or during exams.

Would you like the chance to study abroad? Read a student blog about studying abroad to find out more about the places you can go and what you could gain from the experience: (area on website for this?)

Study abroad is the term given to a program, usually run through a university, which allows a student to live and study in a foreign country and attend a foreign university.

Are you interested in a placement year in a relevant industry? Read about experiences on placement years in the student blogs available (area on website for this?).

A placement year is an opportunity for you to spend a year gaining valuable work experience in a relevant workplace to your course. This usually happens after your second year at university.

Name School

Year Group School

Logos: C, De Montfort University, University of Leicester, Loughborough University, OIS Uni Connect Programme

WORKSHEET CHOOSING A UNIVERSITY

Choosing where to study

Deciding where to study when you finish college/ sixth form can be difficult. Below are some suggestions on aspects to prioritise when researching your options at a university. You may want to add other aspects to this diagram that aren't there, as this is personal so will be different for everyone!

Your Chance to Explore: Make sure you visit: pathwaystohe.ac.uk

Would you like to live at University or home whilst you study?

What would be your ideal distance from home? Consider your main form of transport.

Would you prefer a city or rural campus?

Rural campuses are located in the country, often near farms and wilderness areas and usually near a small town.

What types of accommodation would you like there to be? To give you an understanding on what types of accommodation is available, on the 'explore' tab, choose any University, then 'accommodation' and note down aspects that interest you (i.e. ensuite, shared kitchen, city living, campus living...).

Are there any city attractions you would be looking for? To give you some ideas, look at the videos on the pathwaystohe.ac.uk homepage.

There will be lots of student support available at University. Are there any particular types of support you would be looking for? Choose a University in the 'explore' tab, go to 'take a quick tour', and watch the 'student services' video.

Are there any particular clubs or societies you would like there to be available? Note down some that interest you by exploring 'societies' in the 'university opportunities' help sheet.

Name School

Year Group School


Logos: C, De Montfort University, University of Leicester, Loughborough University, OIS Uni Connect Programme



- Look at the university profiles
- Look at your course profiles
- Create your own career profiles
- Look at example personal statements for particular industry roles
- Check out up and coming Unifrog webinars for further advice and guidance
- Examine your strengths and areas to work on
- Use the information on your Pathways sheets to find the ideal academic future for you.

?PATHWAYS

Follow us on Social Media:

 pathways_em

 PathwaysEM

 Pathways EM

Or visit our website for more information:

www.pathwaystohe.ac.uk

